

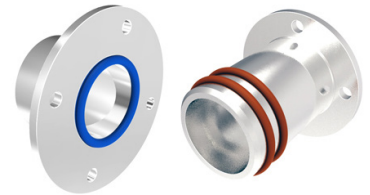


## Never Miss a Fragment: Nuraseal's Custom Metal Detectable Seals for Maximum Safety!

Protect your brand and your customers with our custom metal detectable seals, ensuring FDA Compliance!

- **Unmatched Security:** We design and manufacture seals to your exact specifications, ensuring a perfect fit and tamper-evident closure.
- **Superior Detectability:** Our custom seals are embedded with detectable materials, triggering standard metal detectors and X-ray systems for even the smallest fragments.
- **Peace of Mind:** Boost your HACCP compliance and minimize the risk of product recalls with our reliable detection solutions.
- **Diverse Applications:** We offer a wide range of materials and configurations to suit any application, from food and beverage to pharmaceuticals and beyond.

Contact us today for a free quote and experience the confidence of superior contamination control!



## Metal Detectable Materials

Nuraseal offers custom metal detectable seals in PU - Polyurethane, EPDM Rubber, and Fluoro Rubber. These seals ensure any fragments can be easily identified, maintaining high safety standards and reducing contamination risks. Ideal for industries requiring stringent contamination control. Elevate your standards with Nuraseal's metal detectable solutions.

- **PU-Polyurethane:** Polyurethane (PU) is known for its exceptional abrasion resistance, chemical resistance, tensile strength and non stick surface. It's ideal for industries such as food processing, pharmaceuticals, and packaging, where frequent contact with machinery and rigorous cleaning are common.
- **EPDM Rubber:** EPDM Rubber is renowned for its excellent resistance to heat, ozone, and weathering. This makes it perfect for the automotive, HVAC, and construction industries.
- **Fluoro Rubber:** Fluoro Rubber offers superior resistance to chemicals, high temperatures, and oil. This makes it an excellent choice for the aerospace, chemical processing, and oil & gas industries



North American Manufacturer of Custom Seals

**1-888-687-2732**

## PU-Polyurethane

Properties	Condition	Standard	Unit	Unit		
Colour				blueish	blueish	
hardness	23°C/3 sek.	ISO 868	Shore A	95 ± 2	Shore A	95 ± 2
hardness	23°C/3 sek.	ISO 868	Shore D	46 ± 3	Shore D	46 ± 3
hardness	23°C/15 sek.	ISO 868	Shore D		Shore D	
modulus 100%	23°C	DIN 53 504	MPa	≥ 15	psi	≥ 2175
modulus 300 %	23°C	DIN 53 504	MPa	≥ 28	psi	≥ 4160
tensile strength		DIN 53 504	MPa	≥ 45	psi	≥ 6525
elongation at break	23°C	DIN 53 504	%	≥ 340	%	≥ 340
tear strength	23°C	DIN ISO 34-1	kN/m		lbf/inch	
spec. gravity	23°C	ISO 1183	kg/m <sup>3</sup>	1240	g/cm <sup>3</sup>	1,24
abrasion		DIN 53 516	mm <sup>3</sup>		mm <sup>3</sup>	
compression set	*	ISO 815	%	≤ 30	%	≤ 30
compression set	**	ISO 815	%	≤ 38	%	≤ 38
minimum service temperature			°C	-20	°F	-4
maximum service temperature			°C	90	°F	194

\* 24h 70°C 25% def. \*\* 24h 100°C 25% def. \*\*\* 24h 150°C 25% def.

North American Manufacturer of Custom Seals  
**1-888-687-2732**

7370 Bramalea Road Unit 37, Mississauga,  
 Ontario, Canada L5S 1N6

**nuraseal.com**

## EPDM Rubber

Properties	Condition	Standard	Unit	Unit	Unit	Unit
Colour				blue		blue
hardness	23°C /3 sek.	ISO 868	Shore A	81 ± 5	Shore A	81 ± 5
hardness	23°C /15 sek.	ISO 868	Shore A	81 ± 5	Shore A	81 ± 5
modulus 100%	23°C	DIN 53 504	MPa	≥4	psi	≥ 580
tensile strength	23°C	DIN 53 504	MPa	≥9	psi	≥ 1305
elongation at break	23°C	DIN 53 504	%	≥ 130	%	≥ 130
tear strength	23°C	DIN ISO 34-1	kN/m		lbf/inch	
spec. gravity	23°C	ISO 1183	kg/m <sup>3</sup>	1300	g/cm <sup>3</sup>	1,30
rebound elasticity	23°C	DIN 53 512	%	56,7	%	56,7
abrasion	23°C	DIN 53 516	mm <sup>3</sup>	272	mm <sup>3</sup>	272
compression set	*	ISO 815	%	≤ 13	%	≤ 13
compression set	**	ISO 815	%		%	
compression set	***	ISO 815	%		%	
minimum service temperature			°C	-10	°F	-14
maximum service temperature			°C	210	°F	410
temp. max water/steam			°C		°F	
temp. max hot air			°C	280 short	°F	536 short

\* 24h 70°C 25% def. \*\* 24h 100°C 25% def. \*\*\* 24h 150°C 25% def.

North American Manufacturer of Custom Seals  
**1-888-687-2732**

7370 Bramalea Road Unit 37, Mississauga,  
 Ontario, Canada L5S 1N6

[nuraseal.com](http://nuraseal.com)

## Fluoro Rubber (FKM)

Properties	Condition	Standard	Unit	Unit	Unit	Unit
Colour				blau		blue
hardness	23°C/3 sek.	ISO 868	Shore A	80 ± 5	Shore A	80 ± 5
hardness	23°C/15 sek	ISO 868	Shore A	76 ± 5	Shore A	76 ± 5
modulus 100%	23°C	DIN 53 504	MPa	≥4	psi	≥ 580
tensile strength	23°C	DIN 53 504	MPa	≥7	psi	≥ 1015
elongation at break	23°C	DIN 53 504	%	≥ 150	%	≥ 150
tear strength		DIN ISO 34-1	kN/m		lbf/inch	
spec. gravity	23°C	ISO 1183	kg/m <sup>3</sup>	2590	g/cm <sup>3</sup>	2,59
rebound elasticity	23°C	DIN 53 512	%	6,2	%	6,2
abrasion	23°C	DIN 53 516	mm <sup>3</sup>	288	mm <sup>3</sup>	288
compression set	*	ISO 815	%	≤ 12	%	≤ 12
compression set	**	ISO 815	%	≤ 15	%	≤ 15
compression set		ISO 815	%		%	
minimum service temperature			°C	-15	°F	-22
maximum service temperature			°C	200	°F	392
temp. max water/steam			°C		°F	
temp. max hot air			°C	225	°F	437

\* 24h 70°C 25% def. \*\* 24h 100°C 25% def. \*\*\* 24h 150°C 25% def.

North American Manufacturer of Custom Seals  
**1-888-687-2732**

7370 Bramalea Road Unit 37, Mississauga,  
 Ontario, Canada L5S 1N6

[nuraseal.com](http://nuraseal.com)